

# Occupational safety and health (OSH) management systems

- Introduction
- Benefits of OSH management systems
- Evaluation Procedure of BG Verkehr

Dipl.-Ing. Bettina Nipko

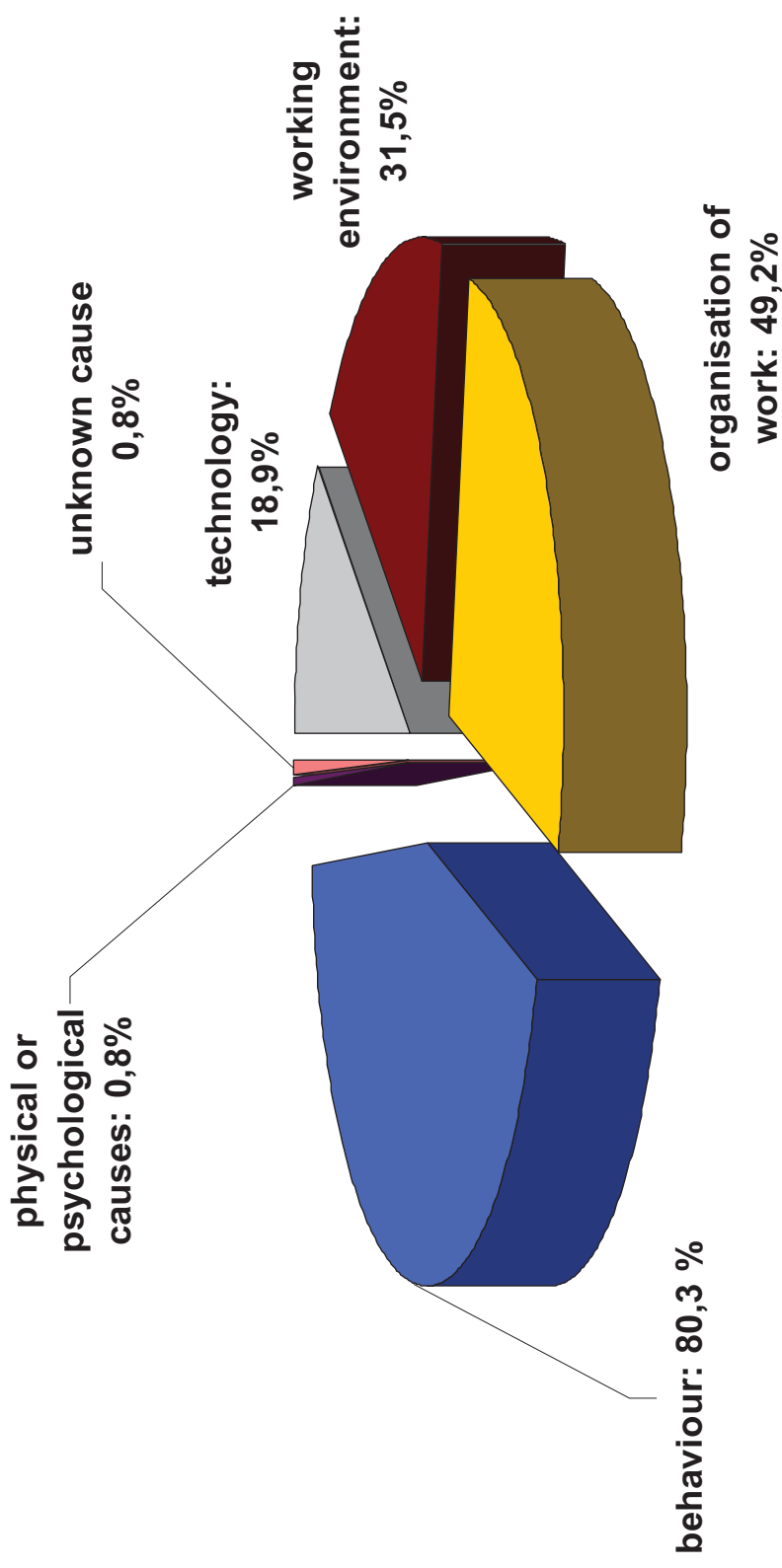
German Social Accident Insurance Institution for Transport and Traffic  
Main office Hamburg, Division OSH-Management Systems

## Accidents at work

### Germany 2013 (Source: SUGA 2013)

- 959.143 reportable accidents at work (more than 3 days of absence), including
- 606 fatal accidents

# Analysis of 238 fatal accidents 2010 (BAuA)



**Per accident could be grasped up to three causes**

Source: Federal Institute for Occupational Safety and Health (BAuA) 2011

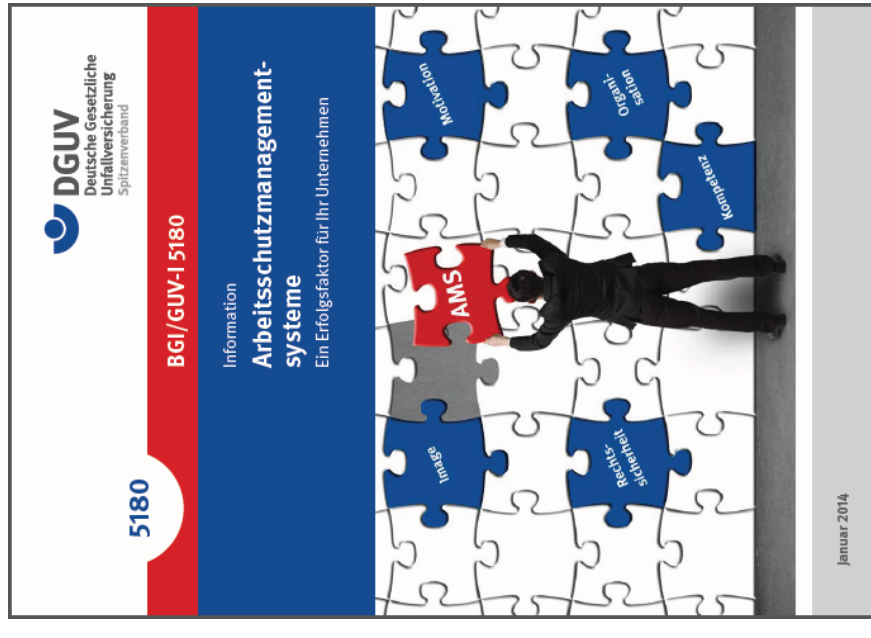
## What is an Occupational Safety and Health Management System?

An OSH management system

- is a coordinated and systematic approach to managing safety and health risks.
- help organisations to continually improve their safety performance and compliance to safety and health legislation and standards.

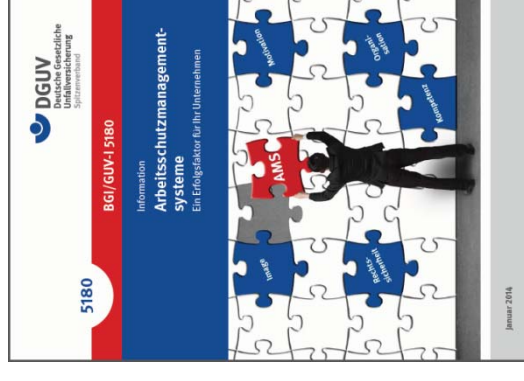
# Benefits of OSH management systems

Reasons for implementing OSH management systems and its effects on organisations



## **Benefits of OSH management systems (DGUV information 211-019)**

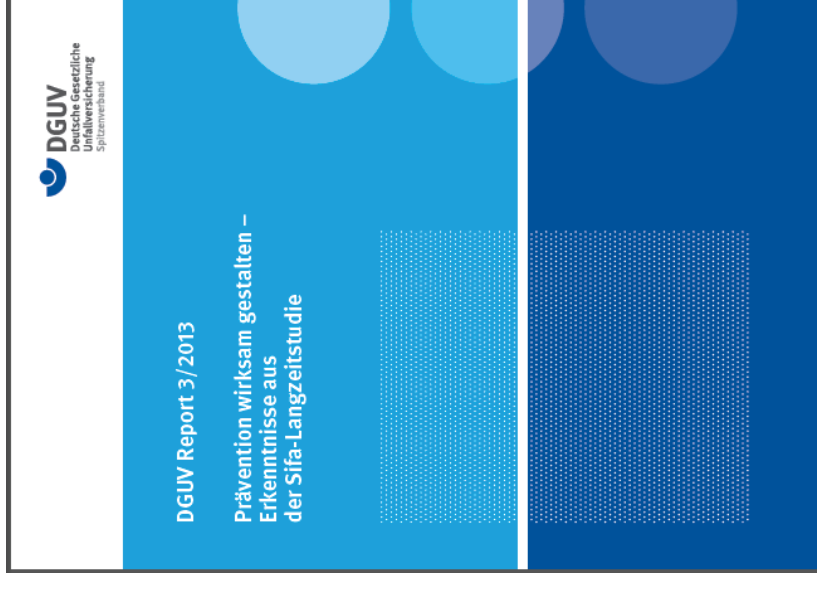
- Increasing legal security
- Optimising organisation and processes
- Enhancing occupational safety and health competence of executives
- Increasing employee satisfaction
- Improving corporate image + boosting trust of customers and partners



# Do OSH-MS contribute to the improvement of the lived practise of the OSH?

DGUV Report 3/2013:

Findings from the long time study on occupational safety professionals



## **DGUV report 3/2013 - long time study on occupational safety professionals**

### **Companies with OSH-MS**

- dispose of a high safety and health culture
- register a proportionally falling number of accidents, sickness rates an occupational diseases compared to companies without such systems.
- The implementation of OSH-MS promotes exhausting preventive potentials of the organisation, in particular preserving health resources of the employees.



## **DGUV report 3/2013 - long time study on occupational safety professionals**

### **Effects on the activity of occupational safety professionals**

- Increased intensity of the activity: occupational safety professionals occupy themselves to a greater extent with preventive duties and less with developing directive statements or implementing instructions.
- Improved access to company management and lived cooperation.
- Comprehensive action and a high effectiveness.

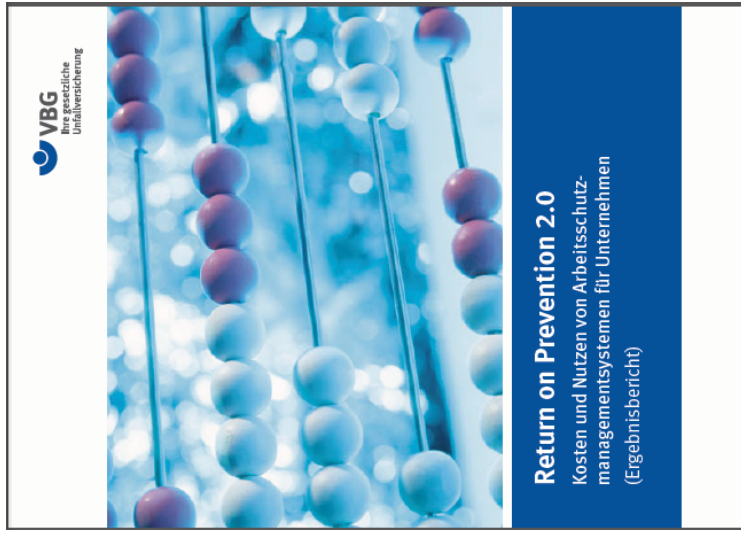
## **Return on Prevention 2.0**

Costs and benefits of OSH management systems for companies

Survey of 81 companies with OSH-MS and 180 without OSH-MS

Companies with OSH-MS

- better implementation of OSH at an overall high level
- better achievement of OSH objectives
- better realisation of microeconomic objectives.

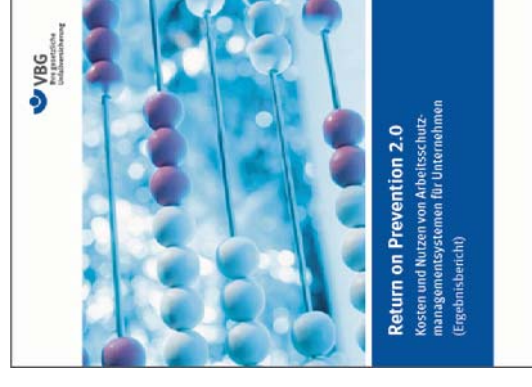


2015-09

## **Return on Prevention 2.0**

### Further results

- OSH lived at all hierarchical levels,
- High acceptance by employees, executives and company management for OSH,
- Optimisation of the organisation of the OSH to avoid organisational failure,
- Continuous improvement of OSH,
- Improving customer relations,
- Enhancing company organisation .



## The OSH-MS evaluation procedure of BG Verkehr

considers the requirements

- of the national guideline on OSH-MS  
[developed in 2002 from the former Federal Ministry for Economy and Labour, the highest authority for OSH of the federal states, the german social accident insurance and social partners]
- and of the ILO-OSH 2001  
[Guidelines on occupational safety and health management systems]



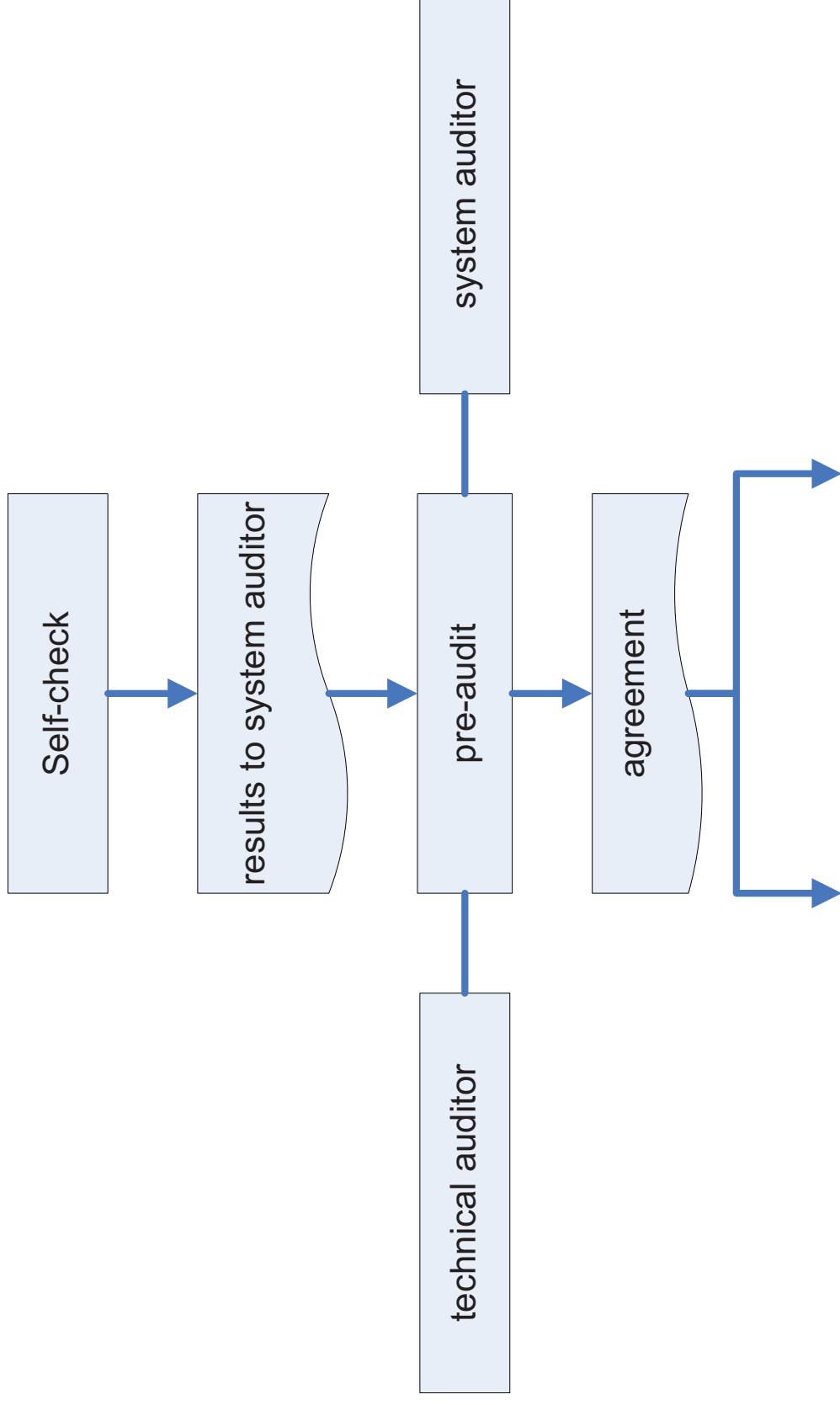
## The OSH-MS evaluation procedure of BG Verkehr

On request it is possible to

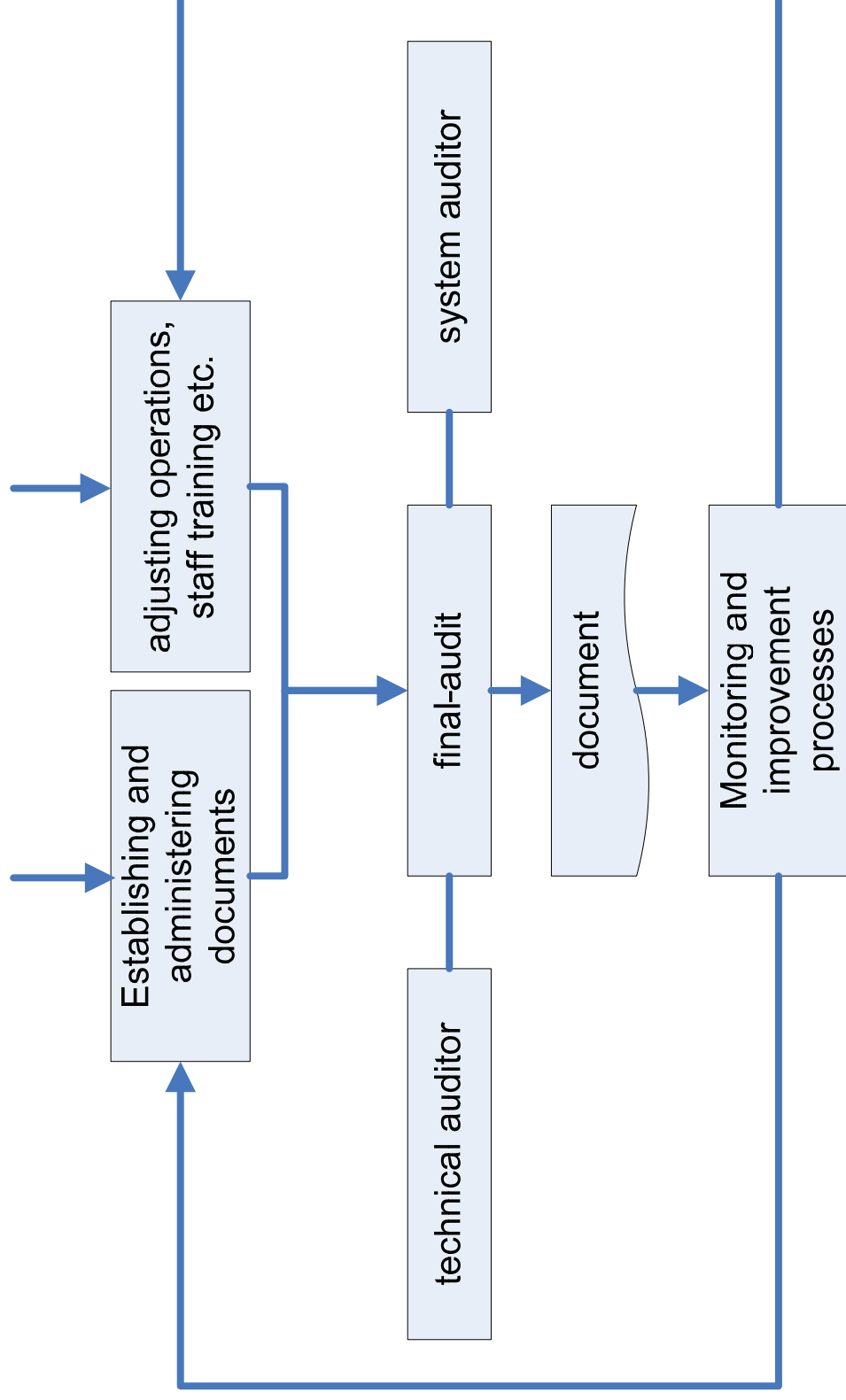
- receive confirmation that the requirements of BS OHSAS 18001 [„Occupational health and safety management systems – Requirements OHSAS 18001:2007] are met
- audit an existing Corporate Health Management

The evaluation procedure is a free offer for members of BG Verkehr

# The OSH-MS evaluation procedure of BG Verkehr



# The OSH-MS evaluation procedure of BG Verkehr



## **What is being checked?**

### **Occupational safety and health + X, i. e.**

1. Fulfilment of all OSH legal requirements
2. Basic elements of a structured management system



## **Basic elements of a management system**

- written objective
- Documenting all definitions, plannings and implementations
- internal audits
- Identifying of at least 5 key figures:
  - Total number of accidents
  - Total number of first aid book entries
  - Accident severity, e.g. number of the sick days caused by accidents
  - Number of the remarks from the internal site inspections
  - Number of customer complaints, as far as they concern OHS
- Annual management review

## Document – and then?

- Document as an award: occupational health and safety is pursued beyond regulatory requirements
- Valid for three years
- Period of validity can be extended after another review
- Recording is the beginning of an ongoing process which helps the company to handle OSH in a simple and efficient way



## **BG Verkehr guideline for implementing OSH-MS**

Support for organisations interested in

- introducing an occupational safety and health management system,
- improving specific areas of organising their OSH,
- getting an overview of the current status of their OSH and where they need to act.



Leitfaden zur Erstellung eines  
Arbeitsschutz-Managementsystems

**Thank you for your attention!**

Dipl.-Ing. Bettina Nipko, BG Verkehr  
Ottenser Hauptstrasse 54, 22765 Hamburg, Germany  
Tel.: +49 40 3980 1971  
E-Mail: [bettina.nipko@bg-verkehr.de](mailto:bettina.nipko@bg-verkehr.de)